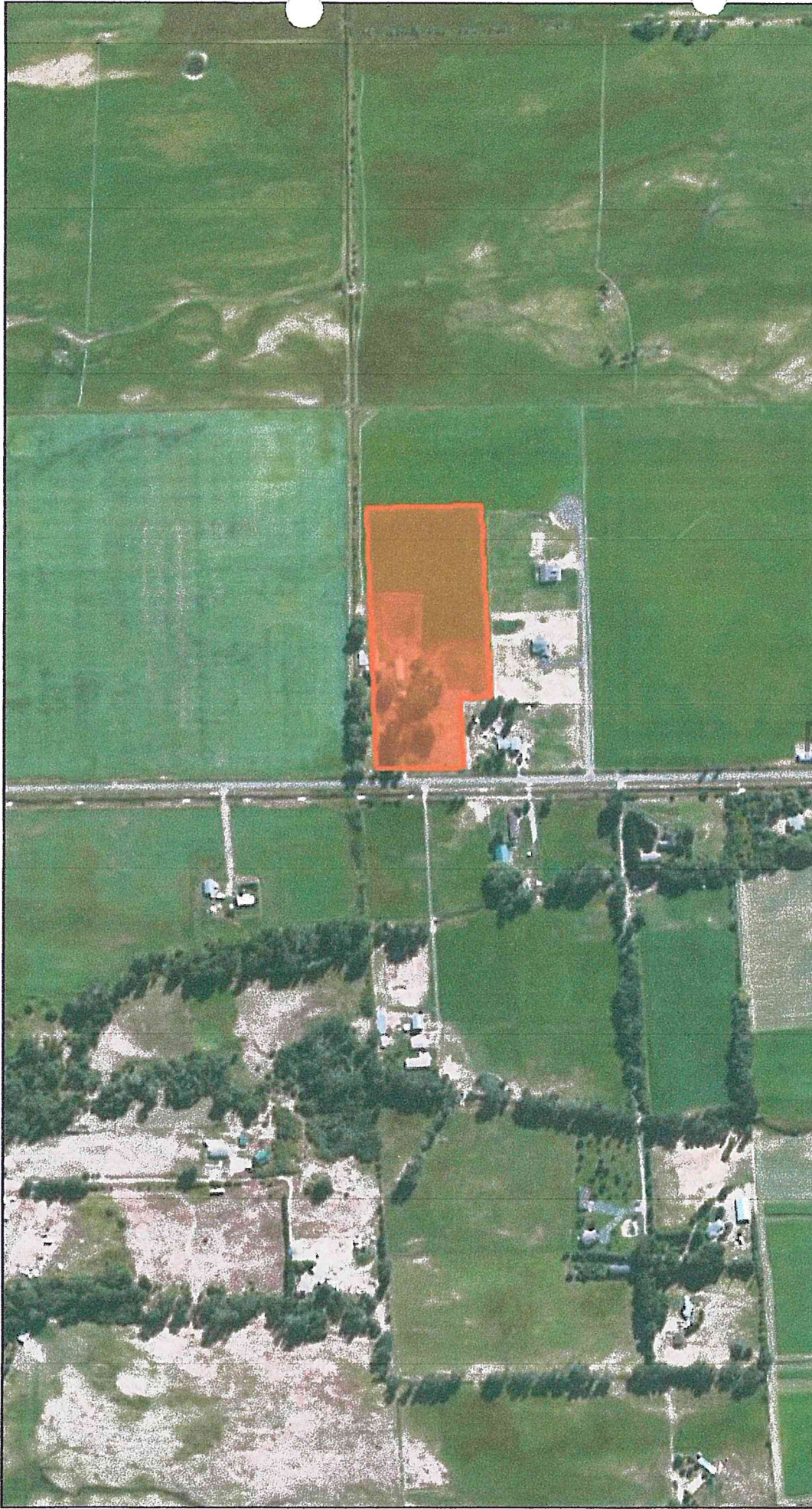
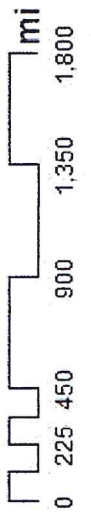
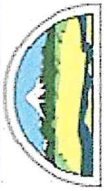


Kitittas County COMPAS Map



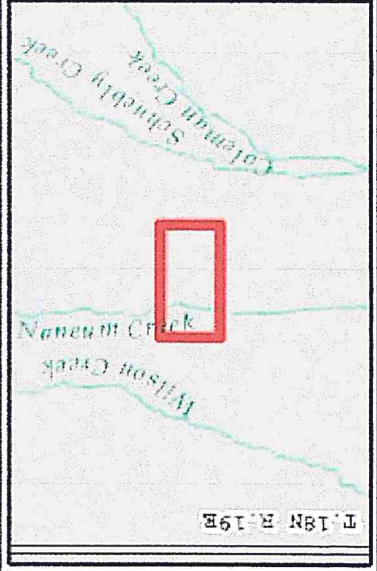
Date: 5/12/2014

Disclaimer:
Kitittas County makes every effort to produce and publish the most current and accurate information possible. No warranties, expressed or implied, are provided for the data, its use, or its interpretation. Kitittas County does not guarantee the accuracy of the material contained herein and is not responsible for any use, misuse or representations by others regarding this information or its derivatives.

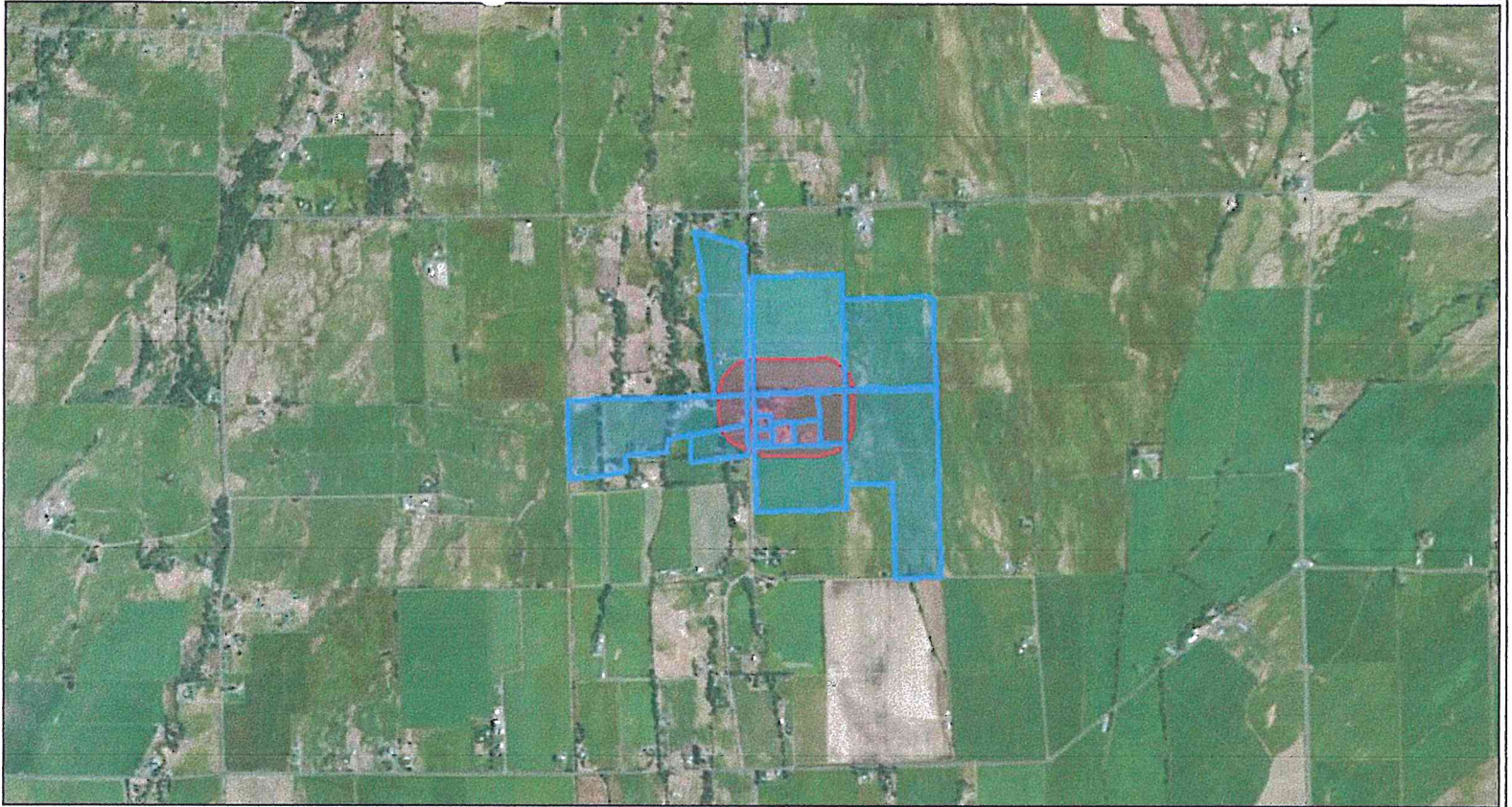


1 inch = 752 feet
Relative Scale 1:9,028

RECEIVED
MAY 13 2014
KITITTAS COUNTY
CDS



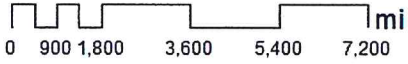
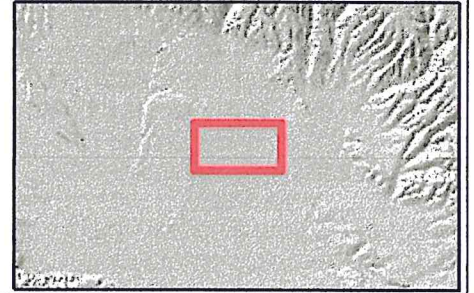
Kittitas County COMPAS Map



Date: 5/12/2014

1 inch = 3,009 feet
Relative Scale 1:36,112

Disclaimer:
Kittitas County makes every effort to produce and publish the most current and accurate information possible. No warranties, expressed or implied, are provided for the data, its use, or its interpretation. Kittitas County does not guarantee the accuracy of the material contained herein and is not responsible for any use, misuse or representations by others regarding this information or its derivatives.



RECEIVED

MAY 13 2014

KITTITAS COUNTY
CDS

BACH OTTO C JR ETUX
PO BOX 925
ELLENSBURG WA
98926

GRAHAM SEAN & ASHLEY
4732 193RD PL SE
ISSAQUAH WA
98027-9312

ROGERS PAUL V.
30 COVEY RUN
ELLENSBURG WA
98926

ROGERS PAUL V JR & DEBORAH R
30 COVEY RUN
ELLENSBURG WA
98926-6955

EDWARDS ROBERT H
6011 NANEUM RD
ELLENSBURG WA
98926

MITCHELL RON V ETUX
1351 NANEUM RD
ELLENSBURG WA
98926

PATTERSON RANDY W
% AGRICULTURE MTG CO
2209 RIVER RD
LOUISVILLE KY
40206

PERRY ADA L
LIFE ESTATE
1001 S CHESTNUT ST APT 622
ELLENSBURG WA
98926-3893

JOHNSON RICHARD E ETUX
5681 NANEUM
ELLENSBURG WA
98926-

BROWN MARILYN A
5801 NANEUM RD
ELLENSBURG WA
98926-

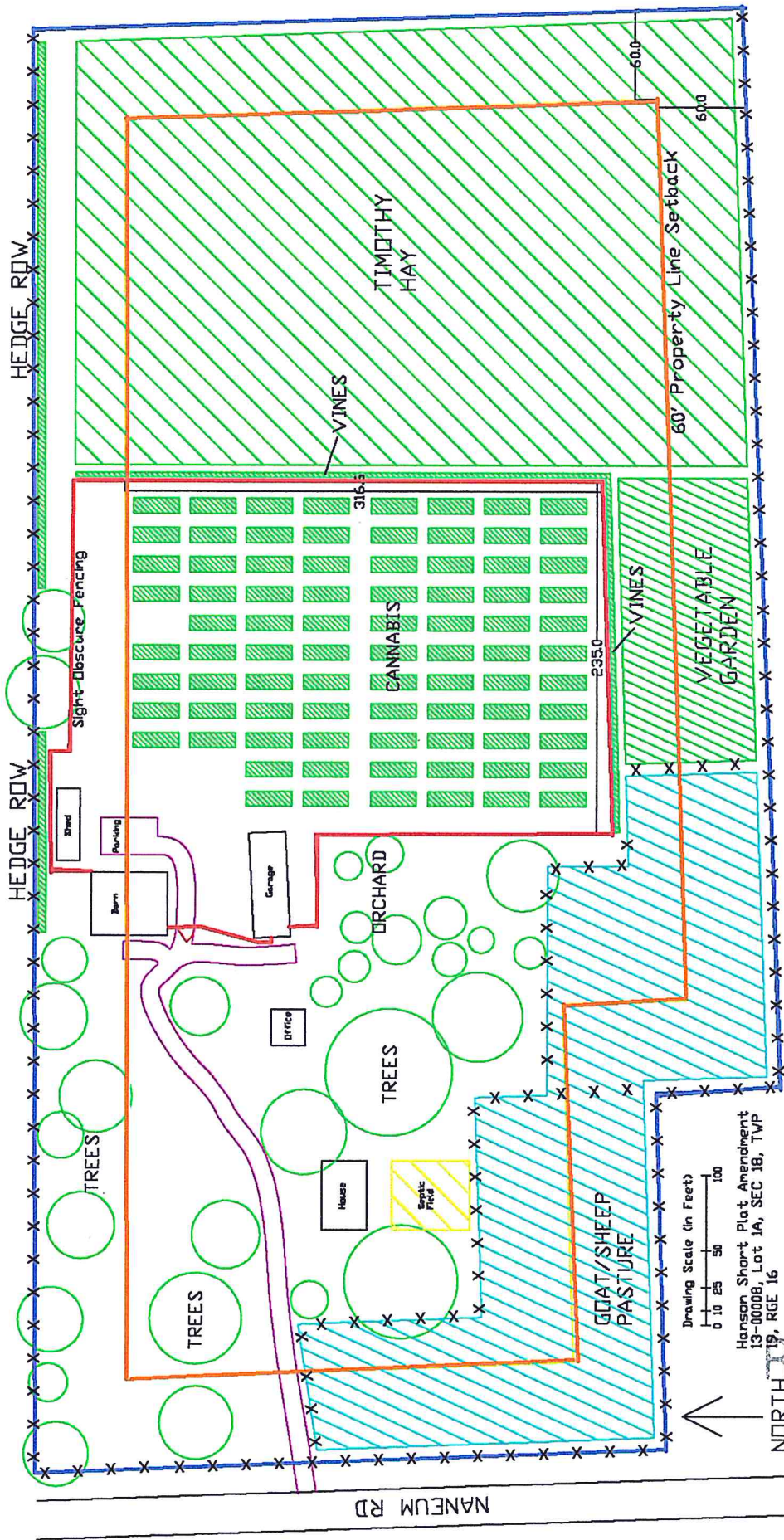
SCHMIDT TIMOTHY R ETUX
5610 NANEUM RD
ELLENSBURG WA
98926-

HOWARD SAMANTHA
5612 NANEUM RD
ELLENSBURG WA
98926-6953

RECEIVED

MAY 13 2014

KITTITAS COUNTY
CDS



- Property Line
- 60' Property Setback Line
- Sight Obscure Fencing
- Pasture or Property Line Fencing

Hanson Short Plat Amendment
13-00008, Lot 1A, SEC 18, TWP
19, RGE 16

RECEIVED

MAY 13 2014

KITTITAS COUNTY
CDS